

### » Features

- Miniature structure with long traveling.
- Several LED colors options.
- Customized cap and symbols are available.
- Combination of switch linked with LED avoid the LED failure during high-temperature processing.



### » Applications

- Operating switches in all types of electronic equipment such as audio apparatus, office equipment, communications apparatus, TV sets, VCRs, etc.

### » Specifications

Rating	50mA 12VDC
Insulation Resistance	1GΩ Min (at 250 VDC)
Dielectric Strength	AC 250V (50/60 Hz for 1 minute)
Contact Resistance	100mΩ Max. (Initial)
Electrically Life	10,000 Cycles Min
Ambient Temperature	-40°C~ +125°C
Operating Force	400 ± 100gf
Total Travel	0.8 ± 0.1mm

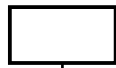
### » LED Specifications

Color	VR	IF	Recommended Operating Current	VF	
				Nor	Max
Red	DC 5V	20mA	20mA	1.7V	2.4V
Green	DC 5V	20mA	20mA	1.9V	2.4V
Yellow	DC 5V	20mA	20mA	1.9V	2.4V
Blue	DC 5V	20mA	20mA	3.0V	3.6V
White	DC 5V	20mA	20mA	3.0V	3.6V

For the specification about the other LEDs, please contact with sales department

### » Product selection

TP 621TML -



LED COLOR		
1		Red
2		Yellow
3		Green
4		Blue
5		White
6		Pure Green
8		Amber
12		Red/Yellow
13		Red/Green
14		Red/Blue
23		Yellow/Green
48		Blue/Amber
52		White/Yellow
58		White/Amber

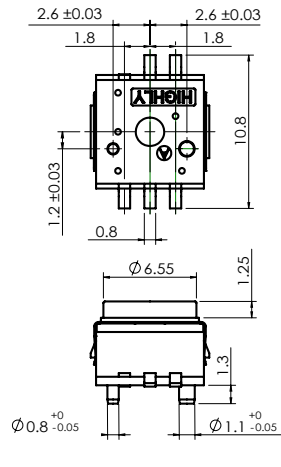
» Operating characteristics

Unit: mm

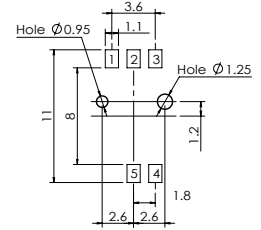
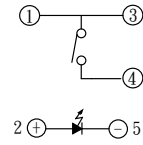
Dimensions

P.C.B Layout

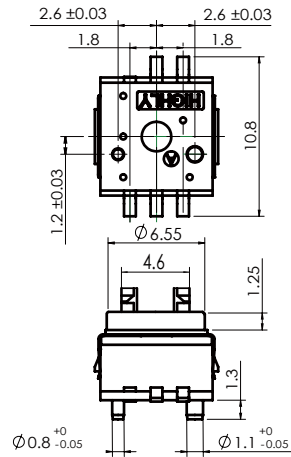
**TP621TML**



pick and place area:  
top of LED Ø2.5 max.



**TP622TML**



pick and place area:  
top of LED Ø2.5 max.

