

»Features

- Reliability is excellent.
- It's having long life and more operating force can be applied such as lightly force.
- Good feeling and more levers are applied.

»Applications

- Joystick, TV game, Time recorder, Air conditioner, Food processor, Juice maker, Alarm, Mixer, Shredder machine, etc.

»Specifications

Electrical Characteristics	
Rating	14(4)A 250/125VAC, UL 61058-1 15A 250/125V AC GB14048.5
Insulating Resistance	100MΩ Min (at 500 VDC)
Dielectric Strength	AC 1000V (50/60 Hz for 1 minute)
Contact Resistance	30mΩ Max. (Initial)
Mechanical Characteristics	
Operating Frequency	Mechanical:max. 120 operations/minute. Electrical:max. 30 operations/minute.
Operating Speed	0.5mm to 500mm/s (pin plunger models)
Vibration	10 to 55Hz, 1.5 mm double amplitude
Operating Life	Electrical:100,000 cycles. Mechanical: 1,000,000 cycles.
Climatic Characteristics	
Degree of Protection	IP40 (Excluding the terminals)
Operating Temperature	-25°C~+85°C
Operating Humidity	95% max. (for 5°C to 35°C)

»Product Selection

VT16 □ □ □ □
1 2 3

1. ACTUATOR TYPES

- 00: Pin plunger
- 01: Short hinge lever
- 02: Hinge lever
- 03: Long hinge lever
- 04: Simulated roller leaf lever
- 05: Short hinge roller lever
- 06: Hinge roller lever

2.CONTACT FORM & COMMON TERMINAL POSITION

- 1 : SPDT ON/NC
- 2 : SPST-NC
- 3 : SPST-NO

3.TERMINAL TYPE

- A:Solder Terminal
- C:Quick-connect Terminal 6.4x0.8 #250
- C2:Quick-connect Terminal 4.8x0.8 #187

»Operating Characteristics

Actuator Type	00 Pin Plunger	01 Short Hinge Lever	02 Hinge Lever	03 Long Hinge Lever
Operating Force max.	300gf	300gf	160gf	80gf
Pretravel max.	1.5mm	1.8mm	3.4mm	8.0mm
Overtravel min.	0.8mm	0.6mm	1.8mm	3.0mm
Movement Differential max.	0.4mm	0.5mm	1.2mm	2.2mm
Releasing Force min	30gf	20gf	10gf	5gf
Operating Position	14.7±0.4mm	15.2±0.6mm	15.2±1.5mm	15.2±2.6mm
Actuator Type	04 Simulated roller leaf lever	05 Short Hinge Roller Plunger	06 Hinge Roller Plunger	
Operating Force max.	160gf	300gf	160gf	
Pretravel max.	3.4mm	1.5mm	3.4mm	
Overtravel min.	1.8mm	0.8mm	1.8mm	
Movement Differential max.	1.2mm	0.4mm	1.2mm	
Releasing Force min.	10gf	30gf	10gf	
Operating Position	18.7±1.2mm	20.7±0.6mm	20.7±1.5mm	

HIGHLY

B9

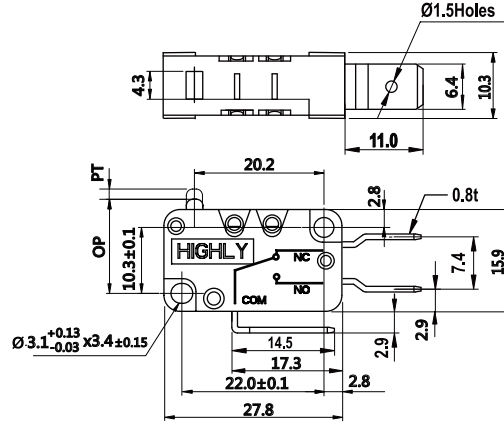
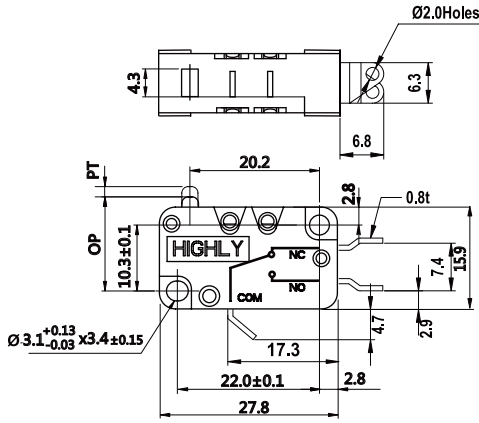
Design, specifications are subject to change without notice.

» Outline Dimension

Terminal

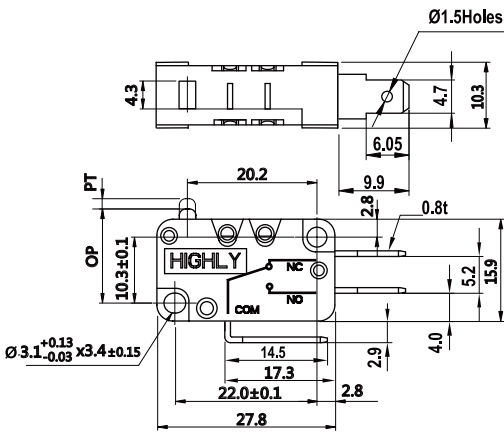
(A) : Solder Type

(C) : Quick-connect 6.4x0.8 Type(#250)



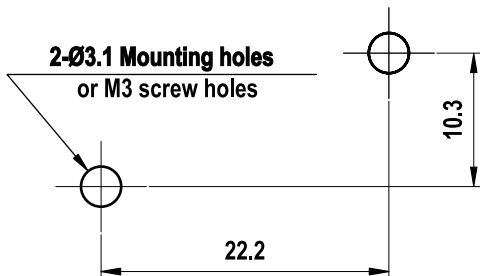
Terminal

(C2) : Quick-connect 4.8x0.8 Type(#187)



» Mounting

Mount the switch by tightening the two M3 screws with a matching diver, using appropriate torque (4-6 kg-cm).



» Contact Form & Common Terminal Position

Contact Form	1 : SPDT	2 : SPST-NC	3 : SPST-NO
Common Terminal Position	button 	button 	button