



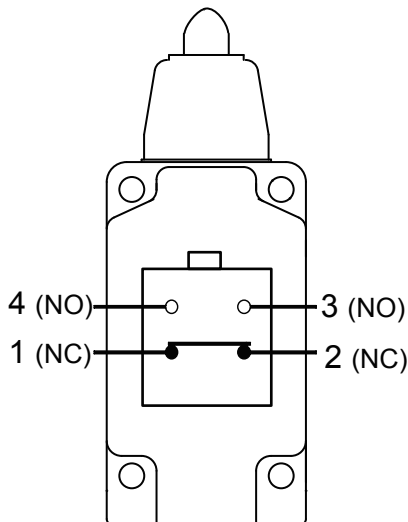
» Features

- High precision and metal die-casting body.
- Easy to wire connection construction
- High mechanical strength
- Dust-proof construction
- CCC approval.

» Specifications

Electrical Characteristics	
Rating	10A 125VAC or 250VAC
Insulating Resistance	100MΩ Min (at 500 VDC)
Dielectric Strength	AC 1000V (50/60 Hz for 1 minute)
Contact Resistance	25mΩ Max. (Initial)
Mechanical Characteristics	
Operating Frequency	Mechanical: max. 120 operations/minute. Electrical: max. 30 operations/minute.
Operating Speed	0.5mm to 500mm/s (pin plunger models)
Vibration	10 to 55Hz, 1.5 mm double amplitude
Operating Life	Electrical: 100,000 cycles. Mechanical: 1,000,000 cycles.
Climatic Characteristics	
Degree of Protection	IP40 (Excluding the terminals)
Operating Temperature	-0°C ~ +55°C
Operating Humidity	95% max. (for 5°C to 35°C)

» Contact Configuration



» Product Selection

WL □□□□-□

1 2

1. HEAD AND ACTUATOR

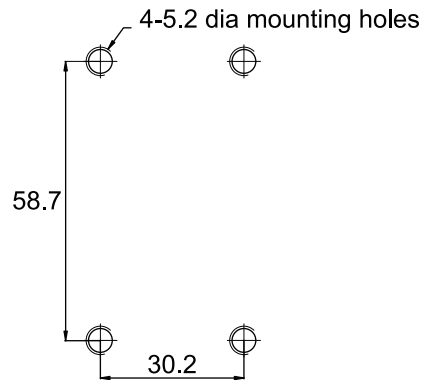
- 5101: Push plunger type
- 5102: Roller plunger type
- 5104: Roller arm type
- 5105: Double roller arm type
- 5106: Wobble stick type
- 5107: Rod lever type
- 5108: Adjustable roller arm type (standard roller)
- 5109: Push plunger type

2. 2-SERIES

The head of -2 series switch can be installed in any of the four directions.

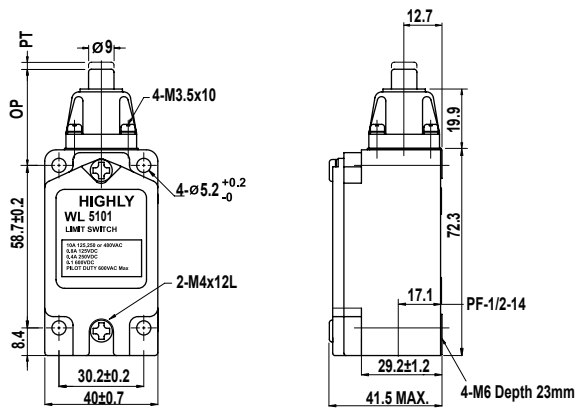
- 90° operation on only one side—impossible
- 90° operation on either side - possible

» Mounting Hole



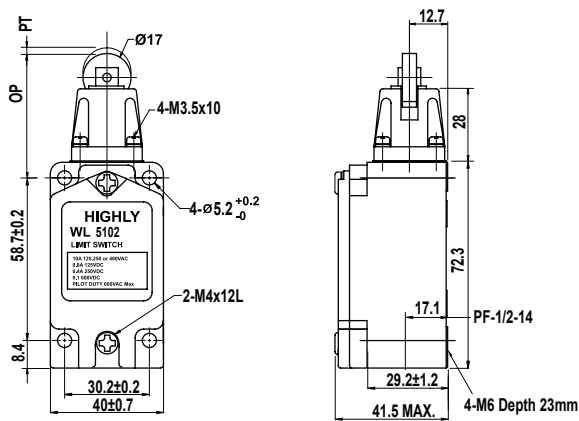
» Operating Characteristics

Actuator Type WL5101 Push Plunger



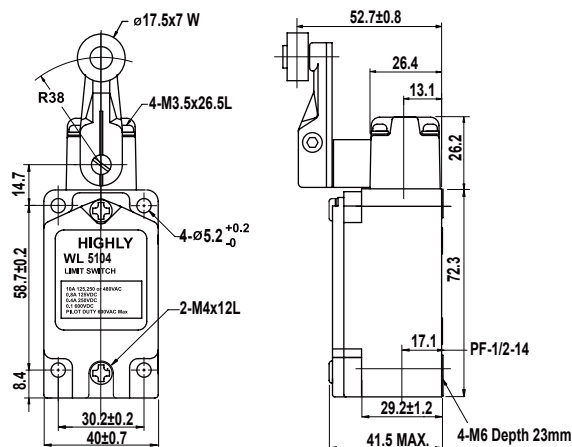
Operating characteristics	Model	WL5101
Operating force	OF max.	2,720 gf
Release force	RF min.	910 gf
Pretravel	PT (NC) max.	1.7 mm
Free Position	FP max	35.7 mm
Overtravel	OT min.	6.4 mm
Movement differentia	MD max.	1 mm
Operating position	OP (mm)	34.0±0.8
TTP		29.5 mm

Actuator Type WL5102 Roller Plunger



Operating characteristics	Model	WL5102
Operating force	OF max.	2,720 gf
Release force	RF min.	910 gf
Pretravel	PT (NC) max.	1.7 mm
Free Position	FP max	41.2 mm
Overtravel	OT min.	5.6 mm
Movement differentia	MD max.	1 mm
Operating position	OP (mm)	44.0±0.8
TTP		39.5 mm

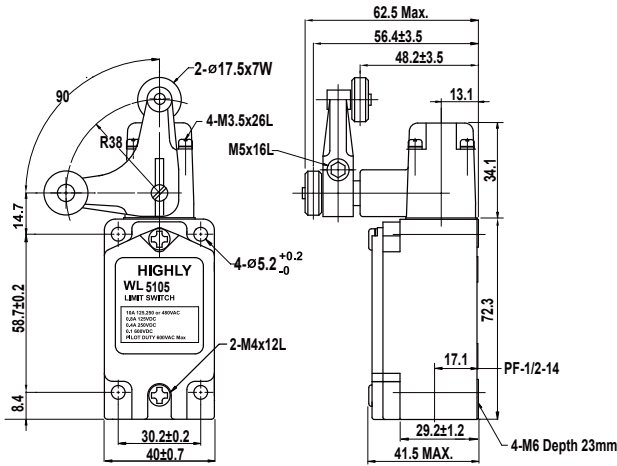
Actuator Type WL5104 / WL5104-2 Roller Arm



Operating characteristics	Model	WL5104	WL5104-2
Operating force	OF max.	1360 gf	900 gf
Release force	RF min.	227 gf	50 gf
Pretravel	PT (NC) max.	20°	30°
Free Position	FP max		
Overtravel	OT min.	30°	60°
Movement differentia	MD max.	12°	16°
Operating position	OP (mm)		
TTP			

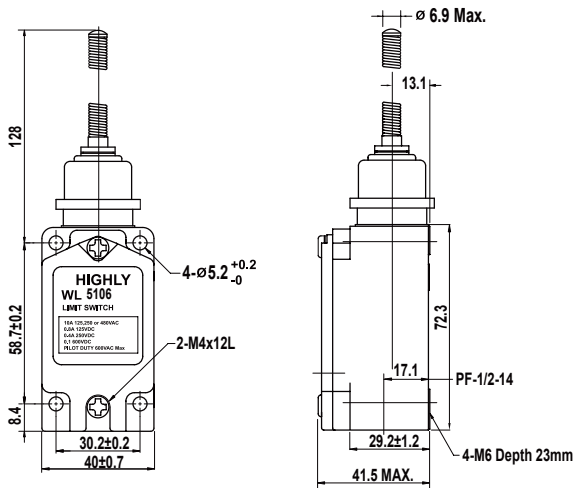
» Operating Characteristics

Actuator Type WL5105 Duple Roller Arm



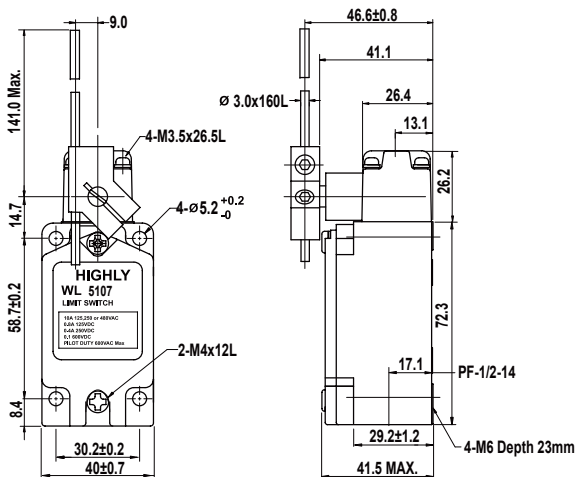
Operating characteristics	Model	WL5105
Operating force	OF max.	1,200 gf
Release force	RF min.	
Pretravel	PT (NC) max.	50° ± 5°
Free Position	FP max	
Overtravel	OT min.	35°
Movement differentia	MD max.	
Operating position	OP (mm)	90° ± 10°
TTP		

Actuator Type WL5106 Wobble Stick



Operating characteristics	Model	WL5106
Operating force	OF max.	150 gf
Release force	RF min.	
Pretravel	PT (NC) max.	28 mm
Free Position	FP max	
Overtravel	OT min.	28 mm
Movement differentia	MD max.	
Operating position	OP (mm)	
TTP		

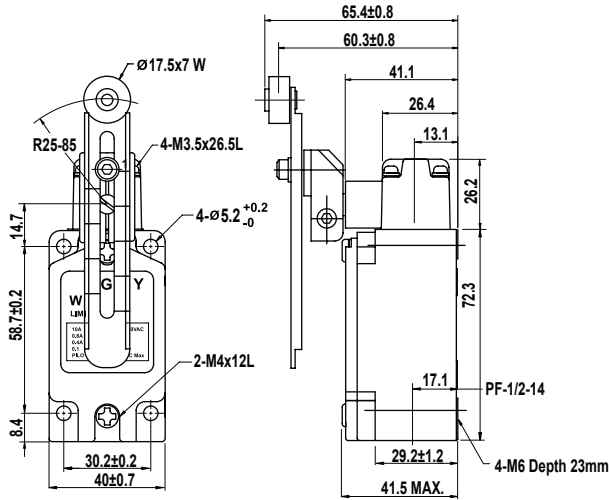
Actuator Type WL5107 / WL5107-2 Rod Lever



Operating characteristics	Model	WL5107	WL5107-2
Operating force	OF max.	1360 gf	580 gf
Release force	RF min.	227 gf	97 gf
Pretravel	PT (NC) max.	22°	30°
Free Position	FP max		
Overtravel	OT min.	30°	60°
Movement differentia	MD max.	12°	16°
Operating position	OP (mm)		
TTP			

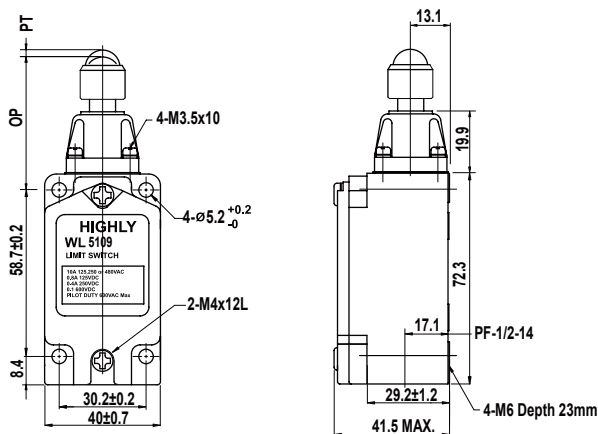
» Operating Characteristics

Actuator Type WL5108 / WL5108-2 Adjustable Roller Arm



Operating characteristics	Model	WL5108	WL5108-2
Operating force	OF max.	1360 gf	900 gf
Release force	RF min.	227 gf	50 gf
Pretravel	PT (NC) max.	20°	30°
Free Position	FP max		
Overtravel	OT min.	30°	60°
Movement differentia	MD max.	12°	16°
Operating position	OP (mm)		
TTP			

Actuator Type WL5109 Roller Plunger



Operating characteristics	Model	WL5109
Operating force	OF max.	2,720 gf
Release force	RF min.	910 gf
Pretravel	PT (NC) max.	1.7 mm
Free Position	FP max	45.7 mm
Overtravel	OT min.	6.4 mm
Movement differentia	MD max.	1 mm
Operating position	OP (mm)	$44.0 \pm 0.8$
TTP		46.2 mm